



Comes With



Hydraulic Quick Hitch



3.5m³ GP Bucket (Teeth/Secondary Cutting Edge)



Pallet Forks

SUMMIT 946

Product Advantage

- **Reliability:** Sturdy frame design for heavy duty, proved made in house transmission make usage life longer
- **Productivity:** 1st with bigger force and 2nd gear with fast speed conjoint usage deliver high productivity. Auto to ready function save your time for operation
- **Fuel consumption:** Low speed engine, E-fan and flow shared hydraulic system make lower fuel consumption
- **Comfortable:** Good visibility cab and low noise design with first class premium 5 directions adjustable seat make comfortable operation

Designs

- Designed and built to suit Australian Working Environment and meet Australian Standards
- Only using the best well known brands on the market



Brands We Use



Work Tool Options



3m³ 4 in 1 Bucket



Grapples

Can also fitted with:

- Stick rakes
- Stone bucket
- Jib
- Hay forks
- Augers
- Rippers

And much more...

Speak to our friendly staff to find our more

Serviceability

- Large wing hood door make service easier, approach to air cleaner, fuel filter and oil filter Large spread hitch design in articulation section make operator easier to approach



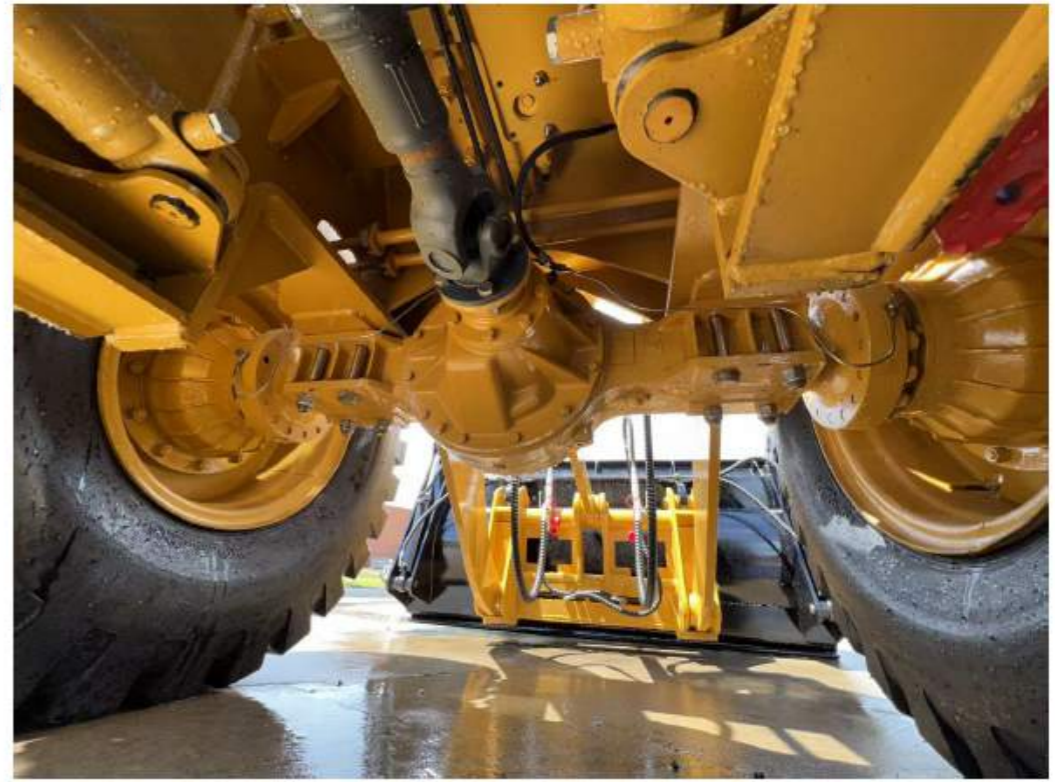
Safety

- Cetified Rops Fops Cabin
- High decibel Beacon and backup alarm make person around easy to attention
- 3 stage alarm system on panel
- 3 touch points entering and exiting cab make operator more safe



Drivetrain

- Genuine ZF transmission provides smooth, quiet, reliable and high efficiency driving experience
- One stage and 3 element torque converter deliver higher efficiency
- 1st gear higher draw bar and 2nd gear faster speed make penetration easier and move material faster



Cooling System

- High performance aluminum cooling package suitable for most of severe applications
- Oil cooler and radiator parallel design can balance heat load inside and suitable diversity applications
- Damping design reduce vibration failure



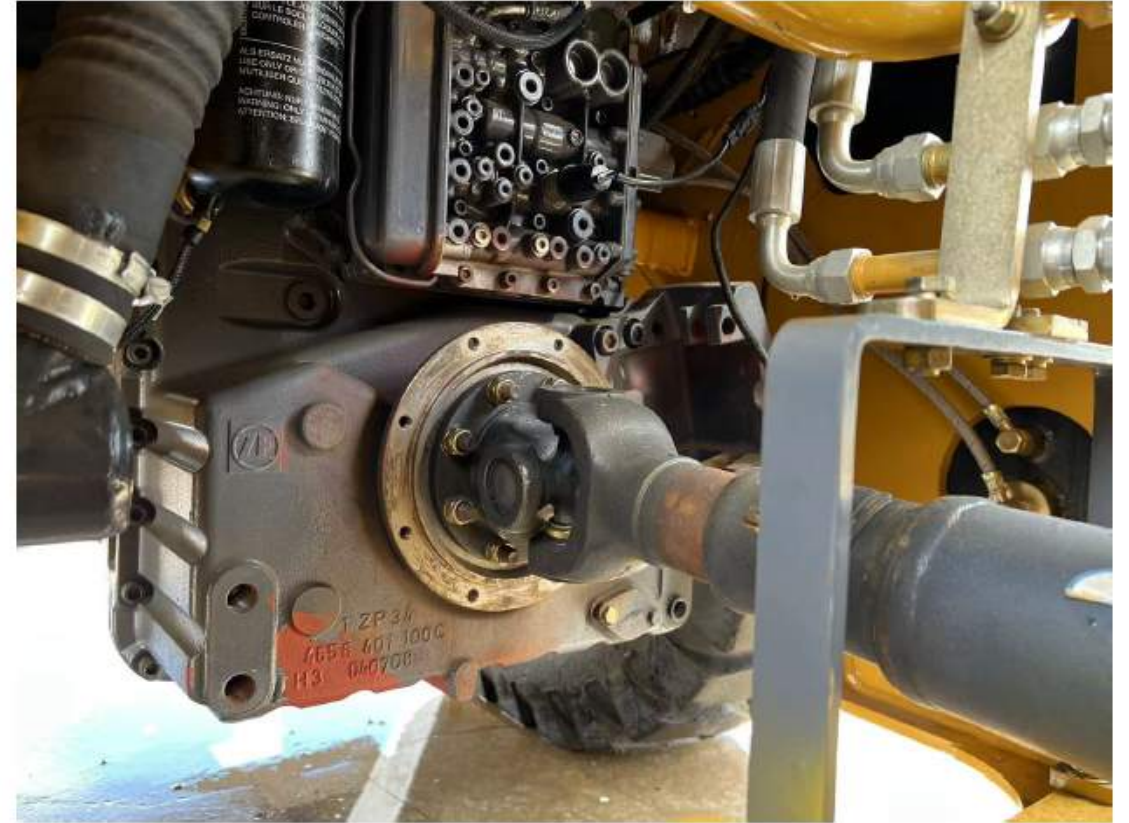
Solid Structure

- Validated by FEA(Finite Element Analysis) and OMSA(On Machine Stress Analysis)
- Middle articulation frame less work space needed and reduce tire resistance
- Large spread hitch design in articulation section can stand more load



Engine

- Low speed engine and E-fan make fuel consumption better
- 3 stage air cleaner with 93% efficiency pre cleaner reduce earlier wearing, high efficiency fuel filter make engine work in good condition
- Cat technology damping mount reduce vibration failure



Efficient Hydraulic System

- Excellence modulation performance implement valve with mechanical control, make operation more accurately
- Full hydraulic load sensing steering and flow shared system save fuel and raise productivity, hydraulic cycle time is only 9.3s
- World class pump and Cat technology lines routing deliver better reliability



Operator Station

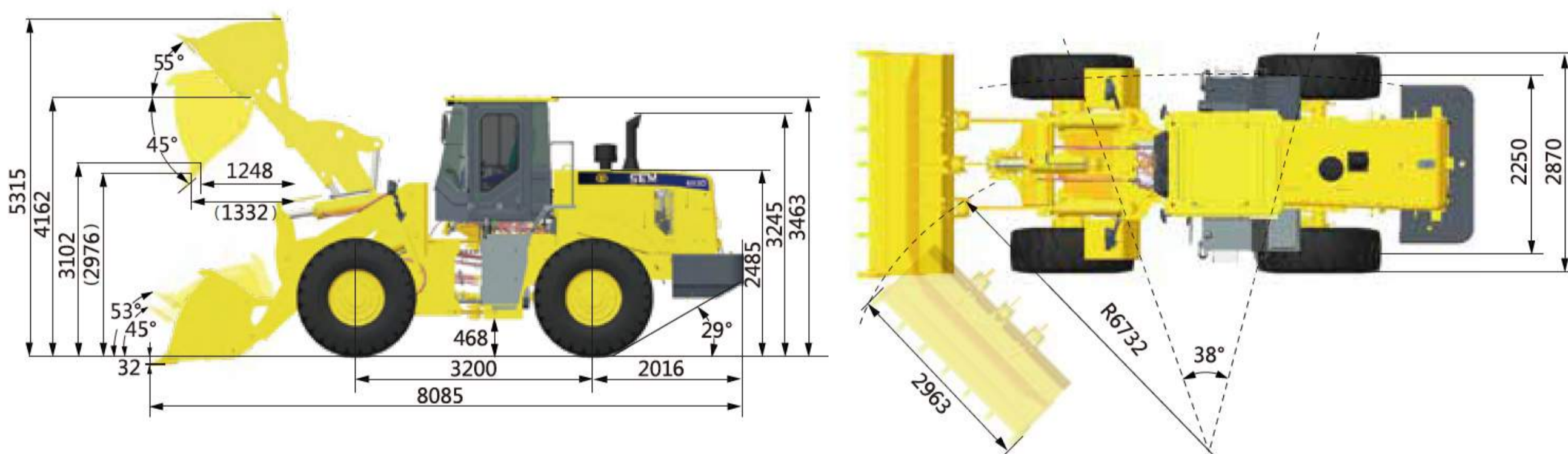
- Mould formed cab with all trims design and more vents with HVAC make operator feel better
- First class premium seat with suspension adjustable, arm rest and safety belt. Up-down, forward and reverse adjustable
- Cat technology damping mount reduce vibration failure
- Slide window, fresh air inlet system make environment better



Main Specifications

Items			SUMMIT 946			Items			SUMMIT 946		
Main Specifications						Engine Brand					
						Genuine DCEC CUMMINS					
Rated Load	kg	4,000	Model		6BTA5.9-C180-II	Rated Power	HP	180	Rated Speed	r/min	2,000 / 2,200
Operating Weight with Standard Bucket	kg	11,000	Displacement	L	5.9	Working Pump		Permco Gear Driven Hydraulic Pump	Boom Raise Time	s	5.1
Bucket Capacity	m ³	2.5	Hydraulic & Fuel								
Wheel Base	mm	2,700	Working Pump		Permco Gear Driven Hydraulic Pump	Fuel Type	s	Diesel	Fuel Tank Capacity	L	150
Overall Dimension	mm	7,400*2,400*3,300	Brake System								
Max. Drawbar Force	KN	171	Service Brake		Wet Disc Brake,Air To Oil control	Steering System					
Breakout Force	KN	177	Parking Brake		Air Operated	System Type		Shared flow	Steering Orbital		EATON Steering Orbital
Dump Clearance	mm	3,300	Tires								
Transmission			Brake System			Steering System			Tires		
Transmission Type		Electronic power shift	Service Brake		Wet Disc Brake,Air To Oil control	System Type		Shared flow	Steering Orbital		EATON Steering Orbital
Transmission Gears		F4/R3	Parking Brake		Air Operated	Steering Orbital		EATON Steering Orbital	System Pressure Setting	Mpa	16
Torque Converter Type		Single stage, 3 elements	Steering System								
Maker & Type		ZF 4WG-158	System Type		Shared flow	Steering Angle (L/R)		38±1	Tires		
Forward I/Reverse I		7.9/7.9	Tires								
Forward II/Reverse II		14/14	Size		20,5-25						
Forward III/Reverse III		22.9/22.9	Type		PR						
Forward IV		39.4	Layer		28						
Axle			Textured Type		L-3/E-3						
Main Drive Type		Spiral bevel gear, single stage									
Final Drive Reduction Type		Planetary type,single stage									
Rear - Oscillating +/-		±11									

Machine Dimensions



► Note: the above dimensions are based on the standard configuration.

PICKMAN EQUIPMENT Pty Ltd

Website: www.pickman.com.au

Address: 5 Luisa Avenue, Dandenong South, VIC3175

PH: 0387741001

Email: Sales@pickman.com.au

