



# PICKMAN EQUIPMENT

## ***SUMMIT ATFL30 3 Tonne 4WD ROUGH TERRAIN FORKLIFT***



### **WHY CHOOSE PICKMAN EQUIPMENT?**

- Machines designed, tested & built for Australian conditions
- Manufacturer-owned, for excellent Australia-wide parts + service backup
- 12 Months / 2000 hours full Parts & Labour warranty, Australia-wide
- 24 Months / 3000 hours full Parts warranty, Australia-wide

**PICKMAN EQUIPMENT Pty. Ltd.**  
38 Nicholas Drive, Dandenong South,  
VICTORIA 3175

**P:** (03) 8774 1001  
**E:** [sales@pickman.com.au](mailto:sales@pickman.com.au)  
**W:** [www.pickman.com.au](http://www.pickman.com.au)

## ■ FEATURES



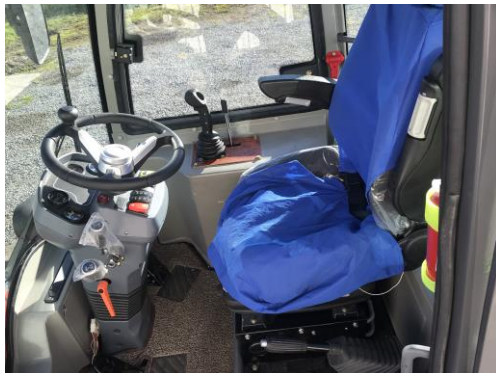
**Constant Four Wheel Drive**

**2 Speed Power-shift Transmission**

**Heavy Duty Axles with planetary gear on each wheel**

**Air Assist Four Wheel Disc Brakes**

**Genuine Donaldson Air Filter**



**2 Stage 4 Meter Mast with Side-shift**

**Excellent Vision**

**Hydraulic Joystick Control**

**ROPS Cabin with Air Conditioning, Radio & Camera**

**Adjustable Suspension Seat & Steering Wheel**



**Full Road Light**

**50 HP Diesel Engine**

**Tilt-open Cabin & Flip-up Engine Cover Provide Exceptional Serviceability**

## ■ PERFORMANCE

**Lifting Capacity: 3000kg**

**Engine: Perkin Type, Xinchai 498BT Diesel Engine With Genuine Donaldson Air Filter**

**Rated Output: 50HP**

**Number Of Cylinders: Four**

**Gearbox: 2 Speed Power Shift (2 Speed Forward, 2 Speed Reverse)**

**Drive Train: Constant Four Wheel Drive With Centre Locking Differential**

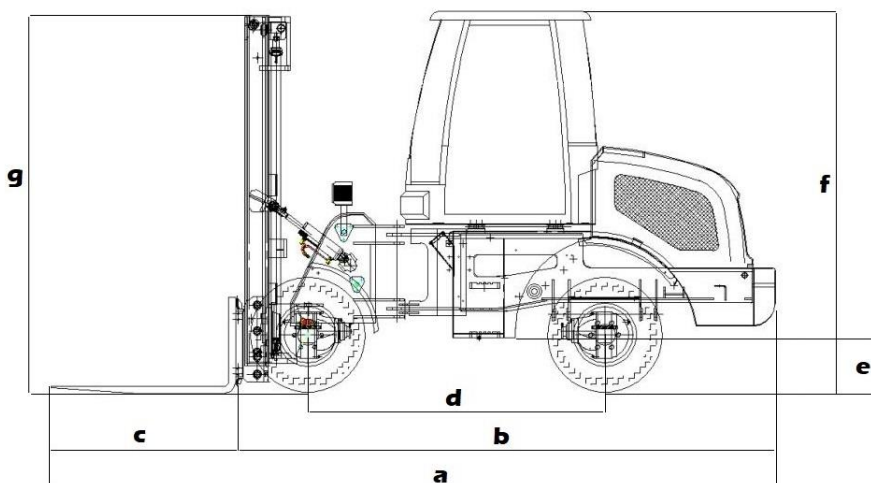
**Mast: 2 Stage Mast With Sideshift**

**Lifting Height: 4 Meter**

**Tyre Size: 12 - 16.5**

## ■ SPECIFICATIONS

<b>a</b>	<b>Total Length</b>	<b>5210 mm</b>
<b>b</b>	<b>Length To Fork Carriage</b>	<b>3950 mm</b>
<b>c</b>	<b>Forks Length</b>	<b>1260 mm</b>
<b>d</b>	<b>Wheelbase</b>	<b>2100 mm</b>
<b>e</b>	<b>Ground Clearance</b>	<b>250 mm</b>
<b>f</b>	<b>Total Height</b>	<b>2650 mm</b>
<b>g</b>	<b>Mast Height</b>	<b>2600 mm</b>
	<b>Overall Width</b>	<b>1450 mm</b>
	<b>Operating Weight</b>	<b>4700 kg</b>
	<b>Tipping Load Straight</b>	<b>3000 kg</b>
	<b>Tipping Load Full Turn</b>	<b>2750 kg</b>



**PICKMAN EQUIPMENT PTY LTD**

**YOUR ROUGH TERRAIN MATERIAL HANDLING SPECIALIST**

**38 Nicholas Drive, Dandenong South, VICTORIA 3175**

**P: (03) 8774 1001**

**E: sales@pickman.com.au**

**W: www.pickman.com.au**