



**PICKMAN
EQUIPMENT**

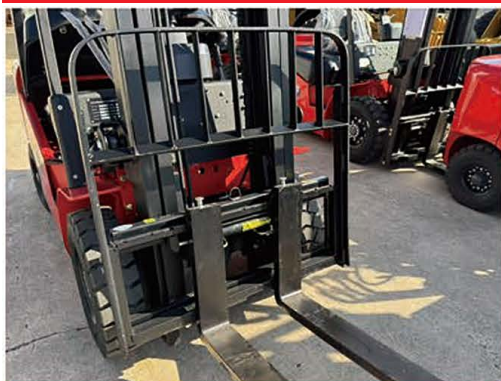
PICKMAN EQUIPMENT Pty. Ltd.
SINCE 2017
5-7 Luisa Avenue, Dandenong South,
VIC3175

SUMMIT K Series

Diesel Counterbalance Forklift



STANDARD FEATURES



- | | | |
|--|---|--|
| <ul style="list-style-type: none">• Pneumatic Tyres• Full Road Light Package• Reverse handle with horn• 2 Stage Mast• Casted Steering Axle• Weather Protection Roof | <ul style="list-style-type: none">• Wide View Mast• Lever Control• Suspension Seat• Hydraulic Side-shift• 4th Function• Electronic Gear Selector | <ul style="list-style-type: none">• Reliable Diesel Engine• Metal Engine Hood• Large Hood Opening Angle• Easy Radiator Access• Exceptional Serviceability• Australian OPS |
|--|---|--|

WHY CHOOSE PICKMAN EQUIPMENT?

- **Machines Designed & Built For Australian Standard & Conditions**
- **Excellent Australia-wide parts & service backup**
- **12 Months / 1000 Hours Full Parts & Labour Warranty**
- **36 Months/ 2000 Hours Full Parts Warranty**



P: (03) 8774 1001
E: sales@pickman.com.au
w: www.pickman.com.au



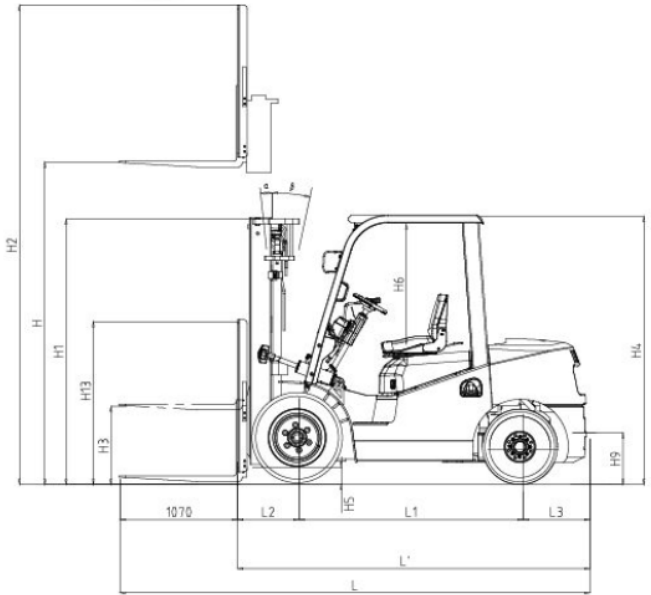
PICKMAN EQUIPMENT Pty. Ltd.
SINCE 2017
5-7 Luisa Avenue, Dandenong South,
VIC3175

Model			K25	K35
Rated capacity		kg	2500	3500
Load center		mm	600	600
Dimensions				
Lifting height (standard)	H	mm	3000	3000
Mast overall height	H1	mm	2000	2070
Backrest height at Max. lifting height	H2	mm	4030	4217
Free lift height	H3	mm	150	155
Overall Height	H4	mm	2120	2140
Min. ground clearance	H5	mm	115	135
Traction pin height	H9	mm	290	310
Backrest height	H13	mm	1000	1182
Overall length(With/Without fork)	L/L'	mm	3880/2610	4020/2744
Wheel base	L1	mm	1650	1750
Front overhang	L2	mm	465	478
Rear overhang	L3	mm	495	520
Overall width	W1	mm	1200	1250
Tread (Front/Rear)	W3/W2	mm	970/970	1000/970
Min.turning radius (Exterior)	r	mm	2270	2400
Min.turning radius (Interior)	r1	mm	35	80
Min.right angle stacking aisle width	Ra	mm	2290	2360
Mast tilting angle (forward/backward)	α/β	deg.	6°/12°	6°/12°
Fork size		mm	1220*122*40	1220*125*45
Weight				
Total weight		kg	3700	4200
Wheel and tyre				
Tyre type			Pneumatic tyre	
Tyre size (Front/Rear)			7.00-12-12PR/ 6.0-9-10PR	28x9-15-14PR/ 6.5-10-10PR
Service brake			Hydraulic foot pedal	
Parking brake			Mechanical hand lever with button	
Engine Model & Specifications				
Model			XINCHAI C490BPG	
Rated power/speed		kw/rpm	40/2650	
Fuel Type			Diesel	
Max travelling speed		km/h	18	

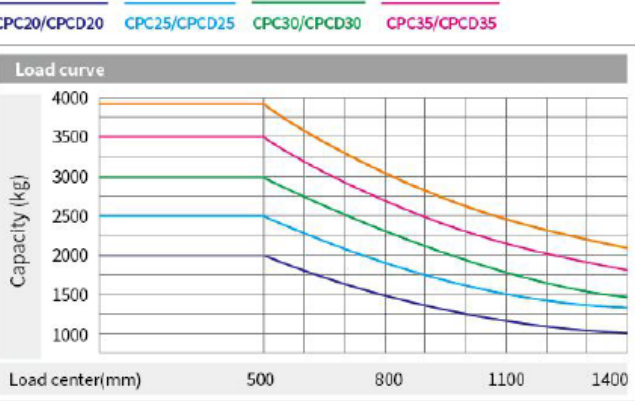
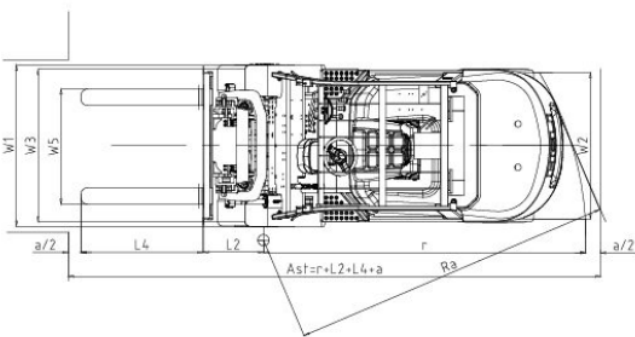
WIDE VIEW FULL FREE 3-STAGE MAST									
Mast model	Max. lifting height mm	Load capacity (load center 500mm) (kg)				Mast overall height (fork to the ground) (mm)		Free lifting height (with backrest)(mm)	
		2t	2.5t	3t	3.5t	2-2.5t	3t/3.5t	2-2.5t	3t/3.5t
ZSM360	3600	2000	2400	2900	3500	1800	1870	800	640
ZSM400	4000	1900	2400	2900	3050	1950	2020	950	790
ZSM435	4350	1850 *1900	2150 *2400	2700 *2900	2900 *3000	2050	2120	1050	890
ZSM450	4500	1700 *1800	1950 *2300	2600 *2800	2800 *2900	2100	2170	1100	940
ZSM470	4700	1600 *1800	1850 *2300	2550 *2900	2650 *2900	2165	2230	1165	1000
ZSM480	4800	1500 *1800	1750 *2300	2450 *2800	2550 *2900	2210	2270	1210	1040
ZSM500	5000	1400 *1750	2000 *2100	2750 *2400	2350 *2500	2300	2370	1300	1140
ZSM540	5400	1300 *1700	1450 *2100	2100 *2400	2250 *2500	2400	2470	1400	1240
ZSM600	6000	*1400	*1700	*2100	*2200	2600	2670	1600	1440

WIDE VIEW FULL FREE 2-STAGE MAST											
Mast model	Max. lifting height mm	Load capacity (load center 500mm) (kg)				Mast overall height (fork to the ground) (mm)			Free lifting height (with backrest)(mm)		
		2t	2.5t	3t	3.5t	2-2.5t	3t	3.5t	2-2.5t	3t	3.5t
ZM200	2000	2000	2500	3000	3500	1500	1570	1620	500	340	443
ZM250	2500	2000	2500	3000	3500	1750	1820	1870	750	590	693
ZM300	3000	2000	2500	3000	3500	2000	2070	2120	1000	840	943
ZM330	3300	2000	2500	3000	3500	2150	2220	2270	1150	990	1093
ZM350	3500	2000	2500	3000	3500	2250	2320	2370	1250	1090	1193
ZM370	3700	2000	2500	3000	3500	2350	2420	2470	1350	1190	1293
ZM400	4000	2000	2350	2850	*3200 3500	2550	2620	2670	1550	1390	1493
ZM425	4250	1900 *2000	2200 *2500	2750 *3000	3100 *3200	2675	2745	2795	1675	1515	1618
ZM450	4500	*1700 *1900	*2000 *2400	*2650 *3000	*2950 *3050	2800	2870	2920	1800	1640	1743
ZM500	5000	*1500 *1700	*2000 *2200	*2400 *2700	*2450 *2850	3050	3120	3170	2050	1890	1993
ZM550	5500	*1600	*2000	*2400	*2500	3350	3420	3470	2350	2190	2293
ZM600	6000	*1500	*1800	*2200	*2300	3600	3670	3720	3500	2440	2543

Note: (1) *stands for the rated capacity when the front tyre is double-tyre.
(2) When the front tyre of the 2-3.5t truck is double tyre, the service weight of the truck is the weight in the table plus 110kg.



RASA: Right angle stacking aisle width
a: Clearance
L4: Length of fork



P:(03) 8774 1001
E: sales@pickman.com.au
w: www.pickman.com.au

